

10 July 2026

## Awards flow for local primary schools at Toi Wearable Arts



Beachlands School students Brooke Dalbeth (left) and Sorcha Fradley won the coveted Star of the Night award at Toi Wearable Arts for their *Treasure Under the Deep* costume, made from melted plastic bottles.

### LICENSED TO SELL

Ian 027 285 9314  
Jenny 0204 000 2564  
Nicolette 027 702 9157  
Clare 021 206 6822

#1 Top Salesperson  
Beachlands Branch 2025

BARFOOT & THOMPSON

SPECIAL AGENTS  
003

We're here for **you**  
and all your property  
management needs!

BARFOOT & THOMPSON  
PROPERTY MANAGEMENT

Beachlands  
09 536 4990



**Find it Fresh**  
**Find it First**

Beachlands Chartered Club  
Corner of Wakelin Road & Third View Ave  
Every Saturday | 8.30am-1.00pm



Visit us  
226 North Road,  
Clevedon 2248  
Ph: 09 292 8656

Email: office@mortontimber.co.nz  
Web: www.mortontimber.co.nz  
Facebook: mortontimber.clevedon

### SPECIALS

**PALINGS:**  
150 X 19 1.8m Paling: \$3.38 each plus GST

**100X100 RS H4 POSTS:**  
2.4m long: \$16.50 each plus GST  
2.7m long: \$18.20 each plus GST  
3.0m long: \$20.25 each plus GST

**RAT BAIT AND STATION COMBO:**  
Bait Station + 1.8kg of Contract Bait: \$72.50

**DECKING:**  
140 X 32 Regular Premium Grade Smooth Decking 4.2 and 4.8m  
Lengths: \$7.80 per metre plus GST

**DECKING SCREWS:**  
MACSIM 10X65 304 SS Decking Screw Combo + Clever Tool  
+ Decking Spacers (100): \$112 per combo plus GST

**CONTACT US FOR FARM SHED LEAN TO QUOTING**

### OPENING HOURS

MONDAY - THURSDAY 7:30AM TO 5:00PM  
FRIDAY 7:30AM TO 4:30PM & SATURDAY 7:30AM TO NOON

**RayWhite**  
Five AM

**Team Brie** - 021 400 979 | teambrie.beachlands@raywhite.com  
Dillon Smith, Brienne Bignell, Conor Duffy  
Premium Service | Premium Results

**#1 SUPREME CARWASH** **SIMPLY THE BEST**  
WHY GO ELSEWHERE?

Latest technology in both touch free and brush automated car washing

347 Ti Rakau Drive, Botany  
**OPEN 24/7**

**Franklin Vets**

Your Local Beachlands Veterinary Team

09 538 0010 || 1/43 Kouka Rd, Beachlands  
www.franklinvets.co.nz

**Deadlines:** Display advertising - 5pm Thursday. Classified and News - midday Friday

advertising@pctimes.co.nz | www.pctimes.co.nz

Pohutukawa Coast Times

GET IN TOUCH

E: info@pctimes.co.nz  
 W: www.pctimes.co.nz  
 F: facebook.com/pctimes  
 A: PO Box 5, Beachlands 2147

EDITOR

Leanne Chamberlin  
 021 426 207  
 leanne@pctimes.co.nz

ADVERTISING

Melody Cutfield  
 021 0261 4467  
 advertising@pctimes.co.nz

CLASSIFIEDS

advertising@pctimes.co.nz

DELIVERY/DISTRIBUTION

distribution@pctimes.co.nz

ACCOUNTS

Pam Rutherford  
 accounts@pctimes.co.nz

The Pohutukawa Coast Times is distributed weekly to 6800 homes and businesses in: Whitford, Brookby, Beachlands, Maraetai, Clevedon, Ardmore, Alfriston, Kawakawa Bay, Orere Pt, Hunua, Paparimu

Member of the New Zealand Community Newspapers Association



The PC Times 20 years ago:  
 14 July 2006: Council study shows need for arts space in Beachlands/Maraetai.



Weekly Tide Chart

10 Fri	2:31am ▲ 3.0m	8:41am ▼ 0.8m	🐟
11 Sat	3:29am ▲ 3.1m	9:42am ▼ 0.7m	🐟
12 Sun	4:32am ▲ 3.1m	10:44am ▼ 0.6m	🐟
13 Mon	5:35am ▲ 3.1m	11:45am ▼ 0.5m	🐟
14 Tue	12:17am ▼ 0.7m	6:38am ▲ 3.2m	🐟
15 Wed	1:14am ▼ 0.6m	7:37am ▲ 3.3m	🐟
16 Thu	2:10am ▼ 0.5m	8:33am ▲ 3.4m	🐟

MARINE FORECAST - VHF CHANNEL 19  
 AUCKLAND FORECAST - 0900 999+YOUR STD

Pine Harbour Electrical  
 Unit 1A Pine Harbour Marina  
 P: 536-6177  
 W: www.phe.co.nz

Guest editorial by Franklin Ward Councillor Andrew Baker

One of the issues regularly raised with me, and that we read or hear in the media, is congestion on our roads. It is not an issue, as many reading this will know, that is specific to urban roads however that is where it is generally worse. Congestion has a multitude of impacts that is so much more than being late for work, an appointment or a flight. In a 2025 report it was estimated that our traffic congestion will cost us \$2.6 billion a year by 2026.

According to the TomTom Auckland Traffic Report 2024, out of 500 global cities Auckland central is the 77th worst congested city. The economic cost is bad enough but the time we spend sitting in traffic is time that we are not engaging in spending time with friends or family, coaching kids sports teams or just relaxing. Based on 2023 Census data, it was predicted that by this year, on average each person will spend over 17 hours stuck in traffic.

International experience clearly shows you cannot simply build your way out of the congestion problem as it leads to a thing called induced demand that means people find the additional road or lane enticing, filling it up and creating even more congestion. There needs to be a balanced approach which is what we have been working on. There are new

or enhanced roads planned to importantly create redundancy or address safety issues on some major networks, there has been massive investment in public transport with the likes of CRL and Eastern Busway and the Government has enabled through legislation the ability for Council to work with Government to introduce time of use charging (TOUC) which charges motorists a fee to use certain roads during peak hours to try and shift behaviour or spread the load. We have been working on this for many years and the enabling legislation was almost unanimously (Te Pati Maori voted against) passed through Parliament, so it has widespread political support. Generally, when we at Council have had to vote on anything to do with it, the votes have been unanimous, all except at a recent Committee meeting where we were meant to be agreeing on the submission to the Government Regulations that will underpin any scheme. I remain bewildered that after years of unanimous support and the loud and repeated cries from around our table that we don't want Wellington telling us what to do or how to do it, when we are asked to provide our feedback on regulations that will impact Aucklanders, a majority of Councillors voted against giving that feedback, instead rallying against the concept of TOUC which has been supported so much including in

February this year. To be clear, any scheme, if applied, will not happen for several years. We have a congestion problem now, to try to make things better is going to require many different mitigations because doing the same thing and expecting a different result is nuts.

*The views expressed in the Pohutukawa Coast Times Guest Editorial column are not necessarily the views of the editor or publisher.*

Clevedon gets a crossing

Auckland Transport has advised that work will begin on improving pedestrian safety in Clevedon next week, weather permitting.

There will be two different work locations; one along Papakura-Clevedon Road, and one along North Road.

Works will take place between 13 July and 31 July, from 7am to 7pm.

The works will include:

- building a new pedestrian crossing between the Hawthorn Munro building and the Superette.
- building a new footpath outside Clevedon Dairy.
- building a new pedestrian refuge island near Clevedon school to improve safety and connectivity.
- installing new line markings and signage.
- installing new lighting to improve pedestrian visibility.
- removing the existing pram crossing near the cemetery to provide additional carparking spaces.

On-street parking will be limited during works, and lanes on Papakura-Clevedon Road and North Road will be reduced with wait times of up to five minutes as a result.

Pedestrian access will be affected as sections of the footpath will be closed. Alternative access will be provided, please follow all signs safely.

For any queries related to the construction, contact Jay Dangwal, email: Jay@agileinfrastructure.co.nz.

WE ARE NOW AN AUTHORISED DEALERSHIP FOR

**MALMAKS WATER SHOP**

CLEAN WATER

**DAB & GRUNDFOS**

REPAIRS & MAINTENANCE ON ALL PUMP BRANDS

STOCK AND SELL

- Pumps • UV Lamps
- All in one pump box
- Carbon & Sediment Filters
- Salt • Bore Softeners

PH: 530 8872

021 470 588 | Whitford Village  
 www.malmakswater.com

- DAB • GRUNDFOS • GREENWAY • VIQUA
- ATLAS FILTRI • ALPINE PURE • STERILIGHT
- PURETEC • DAVEY • HANSEN

SERVICING PŌHUTUKAWA COAST FOR OVER 10 YEARS

SUTCLIFFE MATSON LAW

Now two Directors

Braden Matson  
 Director

Breanna Fuller  
 Director

Local lawyers. Trusted advice. Personal service.

PROPERTY | TRUSTS | WILLS | COMMERCIAL | RELATIONSHIP PROPERTY

09 279 8351 | office@smlaw.net.nz | sutcliffematsonlaw.net.nz

Unit A, 16 Bishop Dunn Place, Flat Bush | 38A Wakelin Road, Beachlands

Read online  
 www.pctimes.co.nz

PRIMA COLLISION REPAIRS

Complete panelbeating and car painting

East Tamaki: Unit B 154 Harris Rd, East Tamaki, Auckland 09 274 4778  
 Manukau: 2/117 Kerrs Rd, Manukau, Auckland 09 268 9340

# Board suggests shift away from using rubber chip in playgrounds

Auckland Council has plans to repair the rubber chip surface at Beachlands' Constellation Park's playground in Beachlands, which has one local community representative questioning whether rubber chip should be used in playgrounds at all.

Franklin Local Board deputy chair Amanda Hopkins has flagged her concern about the use of rubber chip surfaces in playgrounds, saying that council would be better to err on the side of caution and use natural surfaces such as untreated woodchip or engineered wood fibre instead.

Rubber chip is a popular choice for playground surfacing in New Zealand. It is soft underfoot, accessible for wheelchairs and pushchairs, and marketed as a sustainable option made from recycled tyres.

Granulated rubber is made from recycled tyres which primarily contain synthetic rubber compound, plus other additives.

Eight years after it was installed, the rubber chip surface at Constellation Park is breaking down, loosening small pieces of rubber which can then enter the surrounding environment, raising concerns about microplastic and chemical contamination.

A 2024 Spanish study published in Science of the Total Environment found that granulated rubber in playgrounds and sports fields can release plastic-related contaminants and chemical additives into the atmosphere, particularly after rain events.

A separate 2024 study found toxic substances in all recycled tyre rubber samples tested, including material used in playground surfaces and artificial turf infill, although it noted that infill on artificial grass tends to involve higher concentrations of recycled tyre material than poured-in-place playground surfaces.

In contrast to these studies, a 2026 review citing over 100 studies concluded that chemical exposures from crumb rubber do not reach levels that produce meaningful harm to humans, wildlife, or ecosystems, although the review has attracted criticism suggesting some of the studies mentioned were funded by

organisations with connections to the industry.

Auckland Council Manager Area Operations Franklin (Parks and Community Facilities) Eli Ewens says Council staff have inspected the Constellation Park playground and found that some of the rubber surface has deteriorated, and that the plan is for contractors to patch the top surface and remove loose particles.

"Safety checks on this playground, including the surfacing, are regularly carried out in accordance with the playground safety standards," says Eli, adding that the surface is safe and compliant with council's safety standards.

"The suppliers have provided documentation of testing of the product that shows the rubber is non-toxic and suitable for playgrounds."

Eli says that instances of surface deterioration are to be expected now that the park has been in operation for eight years.

"When a surface reaches its end of life, we would consider if the whole playground needs to be renewed or just the surface. If it is just the surface, we would likely replace it with the same surface if it still meets the current standards and best practice.

"We consider a range of factors



The rubber chip surface at Constellation Park in Beachlands has started to degrade, prompting environmental concern.

when choosing playground surfacing including safety, environmental impact, cost (including ongoing maintenance costs), site conditions, accessibility and environmental impacts."

Eli says Council is continuously keeping watch on developments in playground equipment including surfacing and would consider using different surfacing if it meets council's safety standards criteria.

Amanda Hopkins remains keen to look at alternatives, and says the Franklin Local

Board has asked council staff to consider natural alternatives where possible, particularly near waterways and the sea.

"In Finland, for example, they are 'rewilding' play spaces, and it has been shown that exposure to microbes living in soil and natural surfaces is beneficial for children's immune systems. It would be great to see us following Finland's lead," says Amanda.



**OUR LADY STAR OF THE SEA CATHOLIC PARISH**

We celebrate Mass at 4.30pm on the first Saturday of the month. On other Saturdays there will be Celebration of the Word with Holy Communion.

**St Hilda's Church,  
3 Wakelin Road, Beachlands**

Visit our website for details  
[www.beachlandscatholic.weebly.com](http://www.beachlandscatholic.weebly.com)



**Howick FUNERAL HOME**  
New Zealand owned & operated since 1993

*Robert Johnstone & Kevin Kelleher*

**A privilege to care for your family**

Every life is special, we understand that. Let us pay tribute to the life of your loved one and celebrate the unique way they have touched you, your family and those around you.

**For a personal, professional service contact us today to discuss your options:  
35 Wellington St, Howick | Phone 534 7300 | [www.howickfuneralhome.nz](http://www.howickfuneralhome.nz)**



**CAMPAIGN LAUNCH  
PUBLIC MEETING**

**2pm  
Sunday  
19 July**

**Due Drop Events Centre  
770 Great South Road  
Manukau**

**NEW ZEALAND FIRST**

Authorised by H Howard, 91 Makino Road, Feilding

# Local primary schools stitch up success at Toi Wearable Arts

Beachlands and Maraetai shone on stage at the recent Toi Wearable Arts show, between them walking away with half of all the awards on offer in a strong field of South Auckland schools.

Beachlands students Brooke Dalbeth and Sorcha Fradley won the top award for their *Treasure Under the Deep* costume which was named Junior Star of the Night. Their design, crafted entirely from melted plastic bottles, brought the hidden beauty of a coral reef to life on stage.

Beachlands School also picked awards across multiple categories. The school's use of unconventional materials was recognised again in the Innovative Use of Materials category, where both *Treasure Under the Deep* and *What the Land Leaves Behind* earned accolades, going head-to-head with entries from Somerville Intermediate and Manurewa Intermediate.

The school's design talents also extended to fine craftsmanship, with *Botanic Beauty* honoured for Excellent Garment Construction. The students also brought flair to the runway, with *Hades Hounds* and *Chomp the Angler Fish* both recognised for Outstanding Stage Presence, alongside Kohimarama School's *Fire from the*

*Ashes*.

*The Unravelling* claimed a Powerful Storytelling award, sharing the category with Somerville Intermediate's *Wings over Whakaari* and Flanshaw Road's *The Difference*.

Maraetai Beach School made its own mark on the night, with *Ringmaster of Endangered Elementals* earning recognition in the Creative Concept category.

**Top right:** Maraetai Beach School student Scarlett Fielden models 'Ringmaster of Endangered Elementals', designed by Phoebe Hollyman, Annabel Eckford, Devon Wills, Renato Zhang, Evelyn Dent and Emilia Pike. Image / Toi Wearable Arts.

**Bottom right:** 'What the land leaves behind' - a dress made from macadamia nut shells designed by Beachlands School students Toby France, Nina Killian and Lucy Hayes (pictured). Image / supplied.



## Honouring and Celebrating Life

Our approach, philosophy and high standards are ideals we are proud to uphold. Our compassion, values and dedication when caring for the bereaved are just a few of the qualities that form the heart of Resthaven Funerals.

**HOWICK.** Cnr Picton & Walter MacDonald Sts | Ph. 533 7493  
**MANUREWA.** 88 Great South Rd | Ph. 267 2530



[www.resthavenfunerals.co.nz](http://www.resthavenfunerals.co.nz)

MEMBER Funeral Directors ASSOCIATION OF NZ

## WISE WORDS 10 JULY



366 days with Wisdom

- To shoulder a difficult task, one should have strength and no anger
- To deal with a difficult person, one should have skills and no complaints
- To walk a difficult path, one should have faith and no fear
- To endure the unbearable, one should have tolerance and no blame

Follow us!



Get the book at FGS Buddhist Temple NZ 16 Stancombe Road Flat Bush 092744880 nzfgs1@gmail.com



 **ELMWOOD**  
Retirement Living



## Find connection in a place that feels like home

Two-bedroom villas available now from \$645,000

At Elmwood Village by Oceania, you'll find welcoming Retirement Living in an established South Auckland neighbourhood, perfectly positioned opposite the Botanic Gardens.

Enjoy peaceful walks, leafy surroundings and a relaxed, down-to-earth way of living, with a vibrant community centre at the heart of village life.

Two-bedroom villas are available now from \$645,000, offering a relaxed, low-maintenance lifestyle in a secure, lock-up-and-leave setting. A new release of homes is also arriving this November.

And with Care available on site should your needs change, you can move forward with confidence, knowing support is there if and when you need it.\*

To find out more about life at Elmwood, call 0800 333 688 or visit [oceaniahealthcare.co.nz](http://oceaniahealthcare.co.nz)

 131 Hill Road, Manurewa, Auckland

Villas are sold under a license to occupy. For residents 70 years and above. \*Subject to availability. Psychogeriatric and dementia care are not offered at Elmwood.



**OCEANIA** Believe in Better

# Pōhutukawa Coast & Country PROPERTY GUIDE



61 Potts Road, Whitford

Tender date 29th July 2026 | Open Homes Sat & Sun 1:00-1:30pm

**GAME, SET AND MATCH** Sprawled across five acres of prime land in the heart of the highly coveted Clifton Peninsula, this exceptional estate offers the perfect blend of country freedom and resort-style luxury. Positioned directly opposite the renowned recreational trail, your weekends are instantly upgraded with horse riding, cycling, or scenic strolls to Clifton Beach right on your doorstep. At the heart of the estate lies this five-bedroom family home, positioned centrally on its acreage so you can keep a watchful eye on all your pasture pets. Step inside to experience a breathtaking sense of grand scale, the high-ceilinged living space creates an airy, sophisticated atmosphere that flows naturally out to the north facing pool and landscaped gardens. The home boasts a dedicated wine or whisky cellar, ready to house your prized collection. The north facing living areas transition seamlessly to expansive decking, complete with an outdoor fireplace and spa, the perfect place to watch the kids at play in the pool, on the court or perhaps cantering around the paddocks. These outdoor amenities elevate this property into a league of its own. Challenge friends to a match on the floodlit, all-weather tennis court, cool off in the 11mtr solar-heated pool, or retreat to the separate pool house, perfect for an extended family member or long staying guests. With gently contoured paddocks, six stables, and a tack room, this property caters for every passion. It doesn't just offer a place to live—it offers a lifestyle to love. This is Game, Set, and Match on your property hunt.

Marketed By: MKS Matt Kath Stu

Matthew Brown 0275 494 673

Kathryn Morris 0274 863 488

Stuart Fitzpatrick 0276 680 287

**BARFOOT & THOMPSON**  
LIVELY REAL ESTATE

# ARE YOU SELLING?

## ADVERTISE HERE FOR PREMIUM RESULTS



Call 021 026 14467

or email [advertising@pctimes.co.nz](mailto:advertising@pctimes.co.nz)

BARFOOT & THOMPSON

IS NOW A GOOD TIME TO SELL?  
TALK TO SOMEONE WHO KNOWS.

WHAT'S YOUR HOME WORTH?  
CONTACT OUR OFFICE OR SCAN THE QR CODE  
TO CONNECT WITH OUR FRIENDLY TEAM



If you're thinking about selling your place, or even just wondering what it might be worth, have a chat with us. Our team can tell you what's happening in the property market around here, and they're only too happy to share that expertise with a free home appraisal, no strings attached.

If you do decide to sell, our skills and expertise - combined with the sales power of the entire Barfoot & Thompson network - will ensure you get the best possible result.

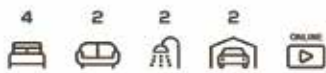
BARFOOT & THOMPSON

Beachlands  
09 536 4990  
beachlands@barfoot.co.nz



NEW LISTING

BEACHLANDS  
9 WEATHERLY DRIVE



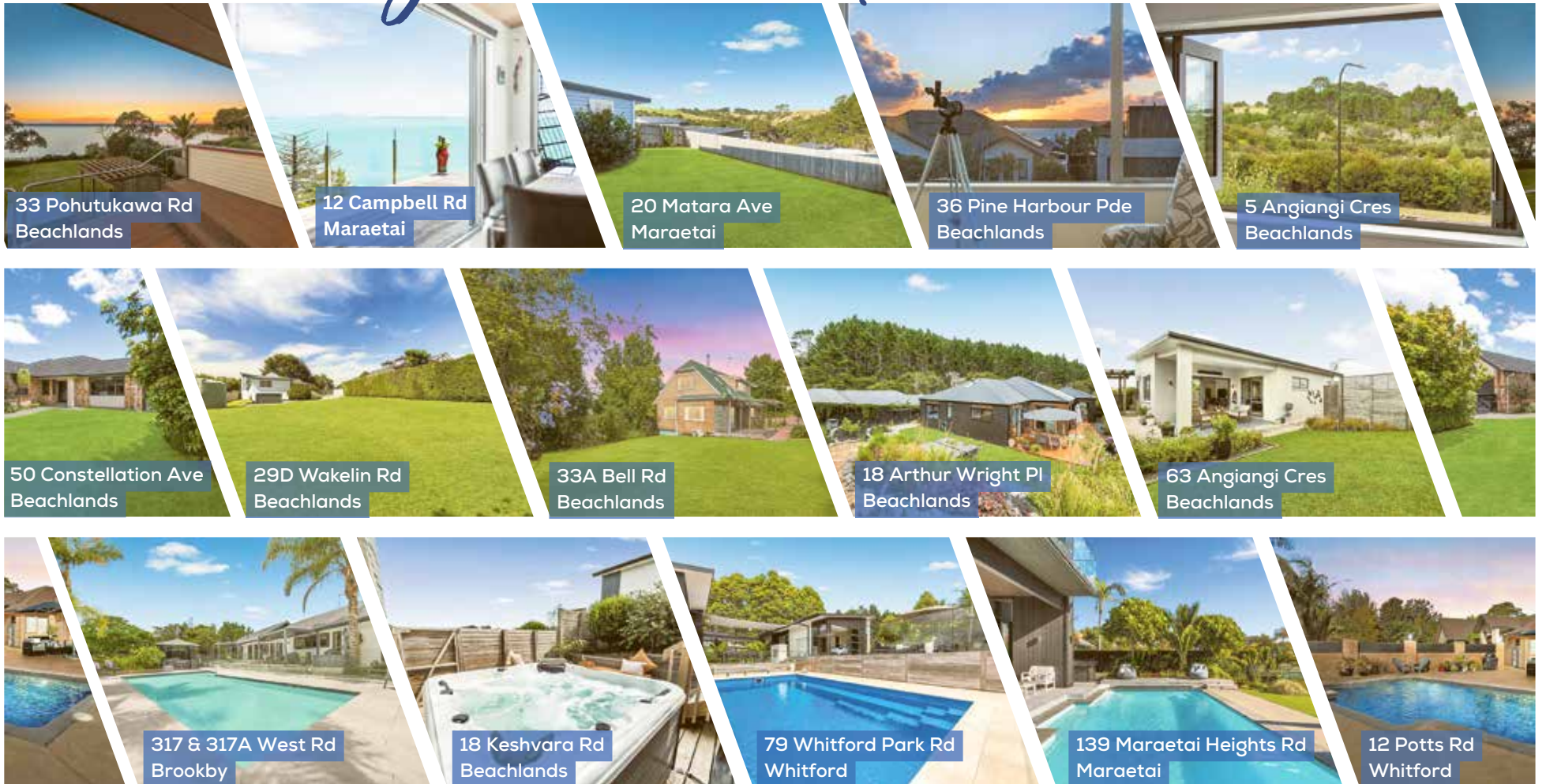
TENDER  
Tender Close: Thursday 23 July (unless sold prior)  
VIEWING  
003 OPEN HOMES SAT & SUN 100 - 1:30pm  
barfoot.co.nz/933334

COMFORT ZONE

- Modern 4 bedroom brick and tile home
- 700m<sup>2</sup> (ma) fully fenced section
- Modern kitchen with butler's pantry
- Master with walk-in wardrobe & ensuite
- Two completely separate living areas
- Covered outdoor entertaining area
- Close to coastal walkways
- Watch 003 property tour online now

SPECIAL AGENTS 003  
Ian Boswell 027 285 9314  
i.boswell@barfoot.co.nz  
Jenny Chandler 0204 000 2584  
Nicolette Hale 027 702 9157  
Claire Dower 021 206 6822

What's on your wish list? WE'VE GOT IT ALL.



BARFOOT & THOMPSON  
Beachlands

Whether you're upsizing or downsizing, ready to move in and start living or looking to build your dream home, we've got a bit of everything.  
Scan the QR code to view all of our current listings, or contact our office directly:  
09 536 4990 | beachlands@barfoot.co.nz



# ESCAPE TO CLEVEDON

## New House & Land packages now available in Conmara Estate



**Custom designed home in picturesque Clevedon!**

Lot 53/10 Pureirei Drive, Conmara Estate, Clevedon from \$1,379,900\*

3 bedrooms 2 bathrooms 2 living areas 185m<sup>2</sup> 537m<sup>2</sup> land



**5 bedroom family living in Conmara, Clevedon**

Lot 54/8 Pureirei Drive, Conmara Estate, Clevedon from \$1,669,000\*

5 bedrooms 3 bathrooms 3 living areas 240m<sup>2</sup> 539m<sup>2</sup> land

\* Price indication only and includes land. Turn key finance is also available – contact MEA Holdings Ltd for further details. Some conditions may apply. Prices current as at 01/07/2026. Images are artist’s impression only.

09 274 2082 / [gjjgardner.co.nz](http://gjjgardner.co.nz)

**G.J. Gardner.** HOMES

## CONMARA ESTATE CLEVEDON

- 17 Lifestyle Lots ranging from 3200m<sup>2</sup> to 3ha
- Town supply water and wastewater connections
- Fully post and rail fencing
- Extensively landscaped with native planting
- Flat land with specified building areas
- Works have commenced with Titles due mid-2027



**REGISTER YOUR INTEREST AT [WWW.CONMARA.CO.NZ](http://WWW.CONMARA.CO.NZ)  
OR CONTACT CAMERON ROSS 021 875 075**



# Pōhutukawa Coast & Country OPEN HOMES

## OPEN HOMES - SATURDAY 11 JULY & SUNDAY 12 JULY 2026

SATURDAY	SUNDAY	PRICE	ADDRESS	DESCRIPTION	OFFICE
2:00 - 2:30	2:00 - 2:30	Tender 30th July	22B Cadwil Drive, Beachlands	Stand-alone home, 3 bedrooms, 2 bathrooms, double glazed, single garage, double glazed	Barfoot & Thompson Beachlands
12:00 - 12:30		\$1,309,000	19 Pinebrook Lane, Maraetai	4 bedrooms, 2 bathrooms, double glazed, double garage, private native bush outlook	Barfoot & Thompson Beachlands
3:00 - 3:30	3:00 - 3:30	Negotiation	48 Porterfield Road, Whitford	80 acre lifestyle property, 6 bedroom, 5 bathroom, 3 living area, pool, panoramic vistas	Barfoot & Thompson Beachlands
12:00 - 12:30	12:00 - 12:30	Negotiation	63 Angiangi Crescent, Beachlands	4 bedrooms, 2 bathrooms, 2 lounges, 2 car garaging, private corner site, established landscaping	Barfoot & Thompson Beachlands
3:00 - 3:30		\$1,235,000	10 Kowaitau Avenue, Pine Harbour Marina, Beachlands	Brand new, 4 bedrooms, 2 bathrooms, 2 lounges, butler's pantry, ducted air-conditioning	Barfoot & Thompson Beachlands
1:00 - 1:30	1:00 - 1:30	Negotiation	29D Wakelin Road, Beachlands	4 bedrooms, 3 bathrooms, 2 lounges, 2 car garaging, 1943m <sup>2</sup> section	Barfoot & Thompson Beachlands
	12:00 - 12:30	Negotiation	5 Rewa Road, Maraetai	927m <sup>2</sup> section, 100m from the beach, makeover or rebuild	Barfoot & Thompson Beachlands
	3:30 - 4:15	\$2,595,000	317 & 317A West Road, Brookby	Lifestyle property 10 acres, 6 bedrooms, 3 bathrooms, office, 2 lounges, swimming pool	Barfoot & Thompson Beachlands
	11:00 - 11:30	\$1,095,000	33A Bell Road, Beachlands	3 bedrooms, 2 bathrooms, private location, 2 living areas, single garage	Barfoot & Thompson Beachlands
1:00 - 1:30		\$ 1,470,000	18 Arthur Wright Place, Maraetai	4 bedrooms, 2 bathrooms, 2 lounges, 2 car garaging, brick and cedar home, landscaped grounds	Barfoot & Thompson Beachlands
2:00 - 2:30	2:00 - 2:30	Negotiation	350 Clifton Road, Whitford	5 bedrooms, 2 bathrooms, 2 lounges, office, large barn with sleep out	Barfoot & Thompson Beachlands
	2:00 - 2:30	Negotiation	84 Intrepid Crescent, Beachlands	5 bedrooms, 4 bathrooms, 3 lounges, office, 2 car garaging, sunny private deck, separate wing	Barfoot & Thompson Beachlands
11:00 - 11:30		\$829,000	1A Fourth View Avenue, Beachlands	2 bedroom cottage, 1 bathroom, 999m <sup>2</sup> section, garage	Barfoot & Thompson Beachlands
2:00 - 2:30	2:00 - 2:30	\$1,869,000	7 Sea View Terrace, Maraetai	5 bedrooms, 3 bathrooms, 2 lounges, 2 car garaging, pool, panoramic views	Barfoot & Thompson Beachlands
	1:00 - 1:30	\$1,479,000	144 Eighth View Avenue, Beachlands	4 bedrooms, 2 bathrooms, 2 lounges, 2 car garaging, north-facing deck, low maintenance section	Barfoot & Thompson Beachlands
3:00 - 3:30		\$1,459,000	33 Te Puru Drive, Maraetai	4 bedrooms, 2 bathrooms, 2 living areas, double garage, double glazed, sea views	Barfoot & Thompson Beachlands
2:00 - 2:30	2:00 - 2:30	\$1,499,000	61 Eighth View Avenue, Beachlands	Single level, 4 bedrooms, 2 bathrooms, 2 lounges, sea views, good off-street parking	Barfoot & Thompson Beachlands
11:00 - 11:30	11:00 - 11:30	\$739,000	1/11 Paketai Lane, Pine Harbour Marina, Beachlands	2 bedroom, 1 bathroom, downstairs apartment with front and rear courtyard	Barfoot & Thompson Beachlands
1:00 - 1:30	1:00 - 1:30	\$1,749,000	70 Liberty Crescent, Spinnaker Bay, Beachlands	4 bedrooms, 2 bathrooms, office, 2 living areas, butler's pantry, approx 249m <sup>2</sup>	Barfoot & Thompson Beachlands
	12:00 - 12:30	\$1,729,000	20 Matara Avenue, Maraetai	Approx 318m <sup>2</sup> , 4 bedrooms, 3 bathrooms, 2 lounges, triple car garaging, double glazed	Barfoot & Thompson Beachlands
12:00 - 12:30	12:00 - 12:30	Negotiation	56 Ninth View Avenue, Pine Harbour Marina, Beachlands	Freehold townhouse, 2 bedrooms, 2 bathrooms, single garage, north facing courtyard	Barfoot & Thompson Beachlands
	3:00 - 3:30	Tender closes 9th July (unless sold prior)	39 Maraetai Heights Road, Maraetai	Stunning nearly 300m <sup>2</sup> contemporary home with sea views, pool, 3 bedrooms, 2 bathrooms	Barfoot & Thompson Beachlands
1:00 - 1:30	1:00 - 1:30	Tender closes 23rd July (unless sold prior)	9 Weatherly Drive, Spinnaker Bay, Beachlands	Single level brick & tile, 4 bedrooms, 2 bathrooms, 2 living areas, double garage, double glazed	Barfoot & Thompson Beachlands
1:00 - 1:30	1:00 - 1:30	\$1,210,000	6 George Couldrey Lane, Maraetai	5 bedrooms, 3 bathrooms, 2 lounges, 2 car garaging, butler's kitchen	Barfoot & Thompson Beachlands

# Thriving and friendly community

Whatever age, whatever stage, life is for exploring. At Ryman, our villages offer the freedom to choose your ideal retirement lifestyle.

Bruce McLaren Village in Howick offers a range of living options. Choose from independent living in an apartment, or enjoy the added support of a serviced apartment. Our village care centre also offers rest home, hospital and specialist dementia care.

Discover a retirement filled with opportunity.



## Apartments available now

All apartments feature modern kitchens, and open plan living areas provide a wonderful environment for hosting friends and family. Enjoy the indoor-outdoor flow to a patio or balcony.

**Apartments priced from \$699,000\*.**



## Serviced apartments available now

Centrally located in the village, enjoy access to activities and amenities. Daily chef-prepared meals and housekeeping mean serviced apartment living frees up time for what matters most.

**Serviced apartments priced from \$399,000\*.**

\*Reflects the lowest available price at time of publication. Availability and pricing subject to change.

To view our show homes call Diana on 09 535 0225.

795 Chapel Road, Howick  
ryman.co.nz

 **Bruce  
McLaren**  
A RYMAN VILLAGE

# Youth Night the place to be for Pōhutukawa Coast teens

- by the Takutai Charitable Trust

What began as a modest fortnightly gathering in 2023 has grown into one of the area's most successful youth initiatives, averaging 70 young people now regularly attending the popular Friday evening Youth Night. Supported by funding from the Takutai Charitable Trust and the Franklin Local Board, the programme has become a vital space for connection, creativity, and support for local youth aged 12 to 16.

The initiative first launched at Beachlands Log Cabin, where a small but enthusiastic group of young people gathered every second week. As word spread and demand grew, organisers saw the need to expand both capacity and accessibility. In June 2024, the event relocated to the larger Te Puru Community Centre, allowing for increased participation and a wider range of activities. The evenings are operated by a combination of paid employees and volunteers.

Now, thanks to additional funding support, Youth Night has reached a new milestone - transitioning into a weekly event, held every Friday from 6.30pm to 8.30pm.

Youth Night has quickly become a cornerstone for local teenagers, providing a free, safe, welcoming environment where they can socialise, learn new skills, and build meaningful connections with peers and supportive adults, whilst enjoying supper.

Each week offers something different, with carefully planned and varied activities including ball games, arts and crafts, and group-based challenges. The diversity of the programme ensures there is something for everyone, catering to a wide range of interests and encouraging participation from all attendees.

Organisers note that the appeal of Youth Night lies not only in the activities themselves, but also in the sense of belonging it fosters.

"It's about creating a space where young people feel seen, supported, and valued," one organiser said. "The growth we've seen over the past few years has been incredible."

Behind the scenes, a dedicated team of volunteers has played a critical role in sustaining the programme. Their commitment has ensured the smooth running of events week after week, helping to create a safe and positive environment for attendees.

However, the programme is now at a critical point.

Due to the programme's success, and the youth night now being held weekly, there is increasing pressure on our volunteers. We urgently need additional community support to keep the initiative running.

"We've been incredibly lucky to have such committed volunteers over the years, but we urgently need more people to step forward," say the organisers. "Without new volunteers, we simply

cannot continue to offer this service."

Youth Night organisers are appealing to the wider community for help, encouraging anyone who can spare a couple of hours on a Friday evening to get involved. Volunteers do not need specialised skills - just a willingness to support young people and contribute to a positive community environment.

Importantly, organisers have highlighted a particular need for male volunteers to

help provide balance and relatable role models for the young attendees.

The commitment can be flexible, with volunteers able to assist on an intermittent basis.

Community members interested in supporting this impactful programme are encouraged to get in touch:

Contact: Paula Browne  
Email: youth@takutaicharitabletrust.co.nz. Phone: 021 0274 7300.

## SPORTS

## 4TH-5TH JULY

### Beachlands Maraetai Football Club

**First Team** vs Te Atatu AFC 0-3, **First Team U23** vs Te Atatu AFC 1-2, **Atletico Beach** vs Auckland United Football Club Decent FC 2-0, **Legionnaires** vs Eastern Suburbs AFC Pirates 2-0, **Rebels** vs Western Springs Stallions 2-2, **Lions** vs Fencibles United AFC GTG Prestige 1-5, **Coasters** vs Manukau City AFC Babasiga Lions 0-2, **Womens First Team** vs Ellerslie AFC Originals 2-0

### Beachlands Maraetai Junior Rugby

**Girls Ripa U11** vs Marist Eastern 70-70, **POD** Mattie Spick, **Passing pink poodle** Isla Pollard, **BMRC Year 2 Orange** vs Year 2 Manurewa, 16-13 **POD** Willow Thornton, **ROD** Jazzy Bymolt, **Year 1 Navy** vs Karaka, **POD** Travis Bymolt, **Shark of the day** Hendrix Wilson, **Opposition POD** Adley Savaiinaea, **BMRC Y4 Orange** vs Manurewa Y4 White, 55-35, **POD** Beauden Jonson, **Opposition POD** Carter, **Girls Ripa U13 Navy** vs Marist Eastern RC, 35-30, **POD** Lexie Anderson, **U13 Girls Mako Orange** vs East Tamaki, 50-20, **POD** Alycia Prinsloo, **BMRC Y8** vs Ardmore Marist Y8, 38-57, **POD** Cian Overend, **BMRC Y6** vs Karaka Y6, Draw, **POD** Jamie Dexter for reffing our game, **BRMC Y2 Navy** vs Ardmore Y2, 19-21, **ROD** Milo Cometti, **POD** Darragh McGrory, **BMRC Y3 Orange** vs Karaka Warriors, 21-14, **POD** Masi Koloamatangi, **ROD** Kora Stevenson, **Beachlands Y5/6 Orange** vs Papatoetoe, 40-75, **POD** Poppy, **ROD** Maddy, **Opposition POD** Harper, **BMRC Y5 Navy** vs Ardmore Marist Y5, 30-30, **POD** Hadley Guard, **TOD** Valliant Vaalepu, **BMRC Y7** vs Onewhero Y7, 43-17, **POD** Neo Brunton, **U15 Navy** vs College Rifles Weapons, 85-20, **POD** Zoe Lee, **Captains Choice** Mila Grogan, **Parents Choice** Kyra-Belle Bobbette, **Opposition Choice** Hazel McDonald

# PINOCCHIO AT MBBC

We're excited to welcome Pinocchio to the club from Thursday 16<sup>th</sup> July.

Enjoy a delicious new dining experience with something for everyone, including pizzas, burgers, fresh fish dishes, platters and more.

Come down and give the Pinocchio's team a warm MBBC welcome.

Not a member and missing your Pinocchio's fix? We're having a community open day on Saturday 15<sup>th</sup> August - see you soon!



Restaurant open Thurs & Fri from 5pm  
Sat & Sun from 12



For bookings, call 09 536 6649 opt. 2  
or email pinocchiopizzas@gmail.com

Maraetai Beach Boat Club | 188 Maraetai Drive, Maraetai

FROM  
16  
JULY



# FOOD AND ENTERTAINMENT



**JOHN HILL**  
ESTATE

Open: Thus-Sun, 12pm until close  
(09) 292 4929  
johnhillestate.co.nz  
Cnr John Hill & White Roads, Hunua




**Domino's**

Celebrate 9 years with us.  
\$5 Large Value Pizzas CODE 94754  
\$2 Garlic Breads CODE 32719

Every Monday in July 2026 from 4pm onwards.



**THE FRANKLIN**  
TAPHOUSE & KITCHEN

Every Wednesday 10% off on the Gold Card for Gold Card holders

Monday – Thursday: 12pm-10pm  
Friday – Sunday: Brunch from 10am till late.

BOOKINGS ESSENTIAL  
Ph: 536 5978  
www.thefranklinpub.co.nz




**VINALTO**

DINING • WEDDINGS • FUNCTIONS  
424 Creightons Rd, Clevedon, Auckland 2582  
PH 09 292 8845 • enquiries@vinalto.co.nz

OPEN: Thur and Fri 5pm - late  
Saturday 12pm - late, Sunday 12pm -4pm



**SUNKIST**  
BAR • KITCHEN

OPENING HOURS  
Tuesday - Wednesday: 4-10pm, Thursday: 12-10pm  
Friday - Sunday: 12pm till late

027 208 6942  
190 Jack Lachlan, Pine Harbour

Small sharing plates  
Cocktails  
Marina view



**Ambrosia**

(09) 536 4151  
Monday to Friday 10:00am - 11:00pm  
Saturday & Sunday 8:00am - 11:00pm

44 Third View Ave, Beachlands

The best of European Cuisine

**HALLERTAU CLEVEDON**

26 CLEVEDON-KAWAKAWA RD, CLEVEDON, AUCKLAND — CLEVEDON@HALLERTAU.CO.NZ — 09 869 2989  
OPEN — MON & TUE: CLOSED — WED & THU: 4PM-10PM — FRI & SAT: 12PM-10PM — SUN: 11AM-9PM

**CROSSWORD ANSWERS**

Across: 3. Tempt, 9. Rely, 10. Recoil, 11. Kneel, 12. Lamé, 14. Cliché, 15. Bikini, 17. Seethe, 20. Ease, 22. Rue, 23. Stud, 24. Swerve, 25. Vestal, 29. Evince, 31. Yowl, 32. Order, 33. Caucus, 34. Etch, 35. Petty. Down: 1. Grill, 2. Climb, 4. Ennui, 5. Precise, 6. Tell, 7. Boycott, 8. Alleged, 13. Eider, 16. Raw, 18. Essay, 19. Hub, 20. Essence, 21. Serious, 22. Reverse, 26. Scent, 27. Loath, 28. Alpha, 30. Coup.

Advertise here to be seen by more than 6,800 households each week!  
Only \$20+gst weekly. Contact advertising@pctimes.co.nz for details.

**Notice to drivers** 

**Pakuranga Plaza  
open as usual**

**Temporary road closures  
in Pakūranga Town Centre  
until late 2026**

Follow signs for entry and parking.



To find out more,  
scan the QR code.



# Clevedon local turns redundancy into new building venture

- by Darien's DIY Decks

After a long career in the construction industry, Clevedon local Darien Warburton was made redundant last year. Searching for employment as a 61-year-old within a construction recession proved tough - so instead he's taken the opportunity to launch his own unique business, helping people with their DIY building projects.

Darien's DIY Decks (and other building projects) offers a service he believes fills a genuine gap in the market.

Drawing on years of project management experience, Darien has built a business that straddles the line between hiring a builder to do everything, or going it alone with no guidance at all.

"Sometimes people want to build a deck, but after getting a quote from a builder they realise they don't have the budget for it, so decide to take on the project themselves," Darien says. "I'm here to help with the DIY process, advising on materials, any potential consent issues, and so on."

It all starts with a one-hour consultation, where Darien talks through clients' plans and goals. From there, he maps out a structural design and timeline, and calculates exactly what materials are needed - then uses his industry contacts to source competitive quotes on the

client's behalf.

Darien reviews each project to determine whether a formal building consent is required, and clarifies when a registered tradesperson is legally needed for specialist work. He's built a trusted network of contacts across building, electrical, plumbing, earthworks and drainlaying, ready to step in wherever specialist trades are needed to keep a project code-compliant.

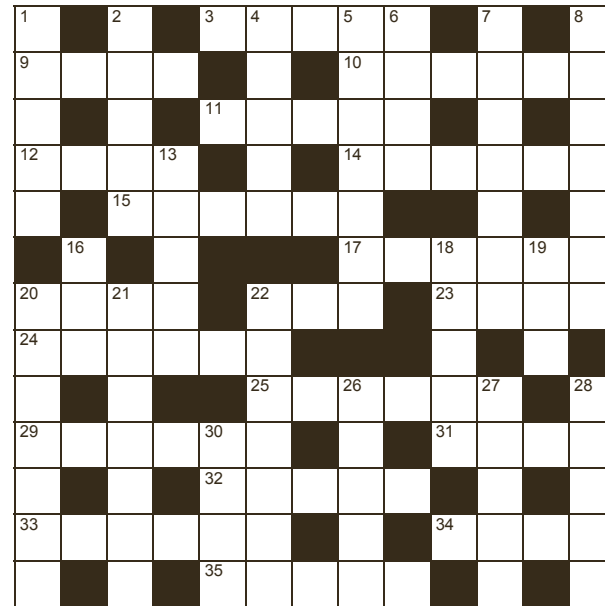
The beauty of the service is its flexibility. Clients can choose hands-on coaching to complete the project themselves, or opt for a seamless, full-service execution if they'd rather hand over the reins partway through. Either way, Darien promises transparent pricing, with clear, upfront explanations of charges, milestones, and payment timing.

For Clevedon and the wider Coast community, it means access to genuine industry expertise, without the price tag of a full building contract, or the guesswork of going it alone.

Those keen to bring their deck or backyard project to life are invited to get in touch with Darien to book a consultation.

Contact Darien via the ad below.

## TEAM BRIE RAY WHITE CROSSWORD



**Brienne Bignell**  
021 400 979  
brienne.bignell@raywhite.com



### Across

- 3. Entice (5)
- 9. Depend (4)
- 10. Cringe (6)
- 11. Genuflect (5)
- 12. Feeble (4)
- 14. Overused phrase (6)
- 15. Beachwear (6)
- 17. Boil with anger (6)
- 20. Facilitate (4)
- 22. Regret (3)
- 23. Piercing jewellery (4)
- 24. Sudden change of direction (6)
- 25. Chaste (6)
- 29. Give expression to (6)
- 31. Wailing cry (4)
- 32. Command (5)
- 33. A meeting of MPs (6)
- 34. Engrave (4)
- 35. Small-minded (5)

### Down

- 1. Question intensely (5)
- 2. Ascend (5)
- 4. Boredom (Fr) (5)
- 5. Exact (7)
- 6. Divulge (4)
- 7. Spurn as protest (7)
- 8. Reportedly (7)
- 13. Duck feather (5)
- 16. Unprocessed (3)
- 18. Written composition (5)
- 19. Centre (3)
- 20. Core (7)
- 21. Grave (7)
- 22. Go back (7)
- 26. Fragrance (5)
- 27. Reluctant (5)
- 28. First in importance (5)
- 30. Masterstroke (4)

Answers on page 12

## DARIEN'S DIY DECKS

And Other Building Projects

### BRINGING YOUR BUILDING & BACKYARD VISIONS TO LIFE

#### WHAT I OFFER

- ✓ **1-Hour Initial Consultation:** A dedicated session to sit down and thoroughly discuss your ideas, goals, and project plans.
- ✓ **Consent Guidance:** We will review your project scope to determine whether it requires a formal building consent or special structural considerations.
- ✓ **Regulatory Navigation:** If a consent is needed, I will help clarify when and where a registered tradesperson is legally required.
- ✓ **Flexible Partnership:** Choose your style—whether you want hands-on coaching and guidance to completely do it yourself, or prefer a seamless, hassle-free full-service execution.
- ✓ **Transparent Pricing:** Clear, upfront explanation of my charges, milestones, and when payments will be due.

#### FROM PLAN TO COMPLETION

Once we align on the initial vision, we lay down the fieldwork to get your project moving efficiently:

##### 1. PROJECT PLAN

We map out the structural design, timeline, and precisely calculate the building materials required.

##### 2. MATERIAL QUOTES

Leveraging industry insights to source and secure competitive material quotes on your behalf.

##### 3. TRADE COORDINATION

Identifying and organizing any specialized sub-trades necessary to deliver a code-compliant job.

#### Trusted Industry Network

No matter how complex the build, I have trusted, professional contacts ready to assist:

- Building
- Electrical
- Plumbing
- Earthworks
- Drainlaying

Ready to build your dream deck or next project?

Let's talk through your plans and build it right.

Contact Darien today to book your 1-hour consultation

027 585 9088 | darienwarburton@gmail.com

BARFOOT & THOMPSON  
LICENCED REAL ESTATE

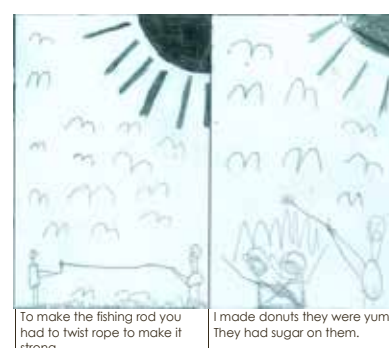
## Student Voice

### LOCAL STUDENTS' NEWS, VIEWS & LITERARY TALENT

This column features news, views and literary talents of students from Beachlands, Maraetai, Clevedon, Brookby, Hunua, Paparimu, Orere and Ardmore Schools.

One student featured each week will be presented with a certificate and a \$20 book voucher, thanks to Barfoot & Thompson's Beachlands and Whitford branches.

A Visit from Crafflab



- by Max Zacka, Year 3, Orere School

# Classified Ads

## FOR SALE

### IGNITION FIREWOOD

Quality firewood bulk and bagged delivered. Kiln dried, clean, shed stored firewood. Order online at [www.ignitionfirewood.co.nz](http://www.ignitionfirewood.co.nz). Logs and trees wanted.

## WORK WANTED

### HANDYMAN

You name it... renovations, gardening, retaining, fencing, landscaping, trellis, light building and maintenance work. Ph Gary on 021 903 020 or 536 6358.

### PAINTING/PLASTERING

Interior and exterior quality plastering and painting. Ph: Gary 021 903 020 or 536 6358.

### RENOVATIONS

Bathrooms, kitchens, toilets - build, tile, glass, flooring, plaster and paint. Start to finish. Exp. builder. Refs avail. Ph: Gary 021 903 020 or 536-6358. Oakes Build Landscape Maintenance. [www.oakes.nz](http://www.oakes.nz).

### MOWER AND CHAINSAW REPAIRS

All small engine repairs, mowers ride-on mowers, chainsaws, weedtrimmers, & chain saw sharpening. No job too small. Free pick-up local area only. Ph: 536 5621 or mob 027 308 7777.

### Classified advertisement pricing:

Standard ad: \$15 (incl GST) per 30 words.  
Boxed ads (eg AGM notices, Situations Vacant): \$8+gst per column centimeter.  
Email your ad to [info@pctimes.co.nz](mailto:info@pctimes.co.nz).

# Professionals & Trades

## ACCOUNTING

**DM** | **DIANE MYERS**  
CHARTERED ACCOUNTANT

Our friendly team offers a wide range of expertise and experience in business and taxation.

The Business Hub, 10 Clevedon-Kawakawa Road  
09 292 9470 | [diane@myersca.co.nz](mailto:diane@myersca.co.nz) | [myersca.co.nz](http://myersca.co.nz)

## BOATING & MARINE

**OVLOV**  
MARINE

09 536 5249  
[www.ovlov.co.nz](http://www.ovlov.co.nz)

Sales and Service of outboard motors, inboards, sterndrives and IPS.

Situated in Pine Harbour Marina and mobile we can care for your vessel be it big or small.  
Contact the team on 536 5249 or email on [kyle@ovlov.co.nz](mailto:kyle@ovlov.co.nz) for service enquiries and [partsp@ovlov.co.nz](mailto:partsp@ovlov.co.nz) for spare parts.



## BOOKKEEPING

**Admin Rescue**  
Better Books = Better Business

- Bookkeeping
- Systems & Processes
- Payroll
- Health & Safety



[adminrescue.co.nz](http://adminrescue.co.nz) | 021 616 909

# Professionals & Trades

## BUILDERS

**Kimpton**

CONSTRUCTION

NEW BUILDS | RENOVATIONS | LANDSCAPING

A friendly, quality focused team, skilled in all residential construction. Here to help, from concept to creation.

Contact Craig Kimpton

021 154 6019 | [craig@kimptonconstruction.co.nz](mailto:craig@kimptonconstruction.co.nz)

## DENTAL SERVICES

**Great Smiles. Better Health.**

At Anthony Hunt Dental we are proud to have been serving our community since 2011.

Leading the way using the latest techniques and technology, we create great smiles and better health for the whole family.

(09) 292 9071 [smile@ahdental.co.nz](mailto:smile@ahdental.co.nz)  
52 Papakura-Clevedon Road  
Clevedon  
[www.ahdental.co.nz](http://www.ahdental.co.nz)

**ANTHONY HUNT**  
Dental  
GREAT SMILES • BETTER HEALTH



**WHITFORD DENTAL**

• All aspects of general dentistry  
• Teeth whitening • All ceramic tooth filling materials using CerecAC omnicaam 3D technology • Permanent tooth replacement with dental implants • Gentle Oral Health Therapists for gum health & maintenance

Contact us now 09 53 08 461

[info@whitforddental.co.nz](mailto:info@whitforddental.co.nz)



**smile dental**  
giving you one more reason to smile

**QUALITY AFFORDABLE FAMILY DENTISTRY**

**\*FREE dental examinations**

\*excl. xrays

129 Beachlands Rd, Beachlands, Auckland

[www.smiledental.co.nz](http://www.smiledental.co.nz) 09 302 0808

phone 09 535 1074

**PREVENT DEEP WRINKLES NOW –**

**SAVE \$170 TODAY AND YEARS ON YOUR FACE LATER.**

XEOMIN 50 units in 3 areas for \$580 normal price \$750



## DRAINAGE & EARTHWORKS



**Drainage Vision Limited**

[www.drainagevision.co.nz](http://www.drainagevision.co.nz)

Mike 027 593 0326

- Drain Unblocking • CCTV Inspections • Certified Drainlayer
- Vacuum Trucks • Pipe & Cable Locations

**Gavin Jones**  
**DRAINLAYING**  
LIMITED



Septic tank servicing, inspections & reports for Auckland Council

Call Gavin on 027 275 2162

Certifying Drainlayer - Over 25 years' experience

## FUNERAL DIRECTORS

**AROHA**  
FUNERALS  
*a time of love*

Funeral Services • Pre-planning • Family-Owned

[www.arohafunerals.co.nz](http://www.arohafunerals.co.nz) 0800 276 420

## HOUSE CLEANING

**NoMoss**  
Pressure Washing Solutions

- House Washing
- Roof Treatments
- Softwash

From the Coast, For the Coast

[www.nomoss.co.nz](http://www.nomoss.co.nz) | [service@nomoss.co.nz](mailto:service@nomoss.co.nz) | 021 989 274

## LAWNS & LANDSCAPING



LANDSCAPING & TREEWORX

Specialists in all aspects of Tree Work and Landscaping. Free Quotes.

027 4767 746 | [inksterlandscapes@xtra.co.nz](mailto:inksterlandscapes@xtra.co.nz)  
[www.inksterlandscapes.co.nz](http://www.inksterlandscapes.co.nz)

**CLS**  
**CLEVEDON**  
LANDSCAPE SUPPLIES

**QUALITY LANDSCAPE SUPPLIES FOR TRADIES & HOME GARDENS**

- Organic soil
- Sand
- Woodchip
- Mulch & bark
- Decorative stone
- Metals (variety)

Delivery & trailer hire available

70A Twilight Road, Clevedon | 021 344 331  
Mon - Fri 7.30am - 5.00pm, Sat 8.00am-4.00pm  
[clevedonlandscapesupplies.co.nz](http://clevedonlandscapesupplies.co.nz)

# Professionals & Trades

## MEAT SUPPLIER



- For all your homekill and hunting processing.
- Vacuum packing standard & delivery available.
- Qualified butchers, expert advice, friendly service.
- Sausages (gluten free available), bacon, salami, biersticks, biltong, smoking and curing.

027 632 8979  
admin@meatworx.co.nz  
www.meatworx.co.nz

## PROPERTY MANAGEMENT

**ATTENTION LANDLORDS!** **Credit Control ON CALL**  
Looking for a Local & Reliable Property Manager?



Experienced property owners trust us for our personal, hands on approach to rental property management

Call today to find out more! **09 296 1333**  
creditcontroloncall.co.nz

## TREE SERVICES



**Your Local Arborists**  
Your problem is our specialty!

- Tree Care, fine pruning and removals
- Shelterbelt removals and chipping
- Palm cleaning and hedge trimming
- Hedge trimming
- Tree Light installations
- Small Hiab Lift and Shifts

CALL PHIL FOR A FREE QUOTE 022 607 4455  
CHECK OUT [jessepcontracting.co.nz](http://jessepcontracting.co.nz)

## MECHANICAL REPAIRS



**POHUTUKAWA MOTORS .co.nz**

AA APPROVED REPAIRER, AA BATTERY STOCKIST, MTA ASSURED

WE ARE YOUR LOCAL, HONEST AND TRUSTED AUTOMOTIVE REPAIRER. POP DOWN AND SEE US. WE'LL LOOK AFTER YOU AND YOUR VEHICLE.

- ALL MECHANICAL REPAIRS
- WOF
- BRAKES
- TYRES
- AUTOMOTIVE AIRCON SERVICING

57 THIRD VIEW AVENUE, BEACHLANDS  
09 536 6664

## ROOFING



ROOFING & SPOUTING NZ LTD  
Delivering Quality & Durability

MONIER MONIER ROOFING SPECIALIST, SUPPLIER & INSTALLER

RE-ROOFING | NEW ROOFS | ROOF COATINGS  
CONCRETE ROOF TILE SPECIALIST | CONCRETE TILE REPAIRS  
GUTTER REPLACEMENT | INTERNAL GUTTER CONVERSION

0800 766 350 | [www.roofingnz.co.nz](http://www.roofingnz.co.nz) | [info@roofingnz.co.nz](mailto:info@roofingnz.co.nz)

## TYRES



**TYREGUARD**  
PROTECTING YOUR JOURNEY

YOUR TRUE TYRE PROFESSIONAL ON THE COAST

- Friendly Reliable Service
- Locally Owned & Operated
- Over 20 Years Experience
- For ALL Your Tyre Needs

Agricultural, Batteries, Car / Passenger, Earthmover, Mag & Tyre Packages, Puncture Repairs, Truck / Commercial, Wheel Balancing, 4WD / Off Road, 24/7 After-Hours Callout

Call Mike 021 901 034 | [sales@tyreguard.co.nz](mailto:sales@tyreguard.co.nz) | [www.tyreguard.co.nz](http://www.tyreguard.co.nz)

## VETERINARY



**Franklin Vets**



Your Local Beachlands Veterinary Team

09 538 0010  
[beachlands@fvs.co.nz](mailto:beachlands@fvs.co.nz)  
[www.franklinvets.co.nz](http://www.franklinvets.co.nz)

## MARAETAI AUTOMOTIVE

All Makes & Models | All Types of Repairs  
Petrol - Diesel - European Vehicles - Loan Cars

- Servicing • WOF • Brakes • Clutches • Wheel Alignments
- Tyres • Transmission Services • Batteries • Welding
- Cambelts • CV Joints • Auto Electrical Repairs

131 Maraetai Drive, Maraetai Ph: 536 6542

ALL WORK GUARANTEED  
HOURS: Mon - Fri: 8am-5pm

## SCAFFOLDING

QUALITY | RELIABLE | WHITFORD BASED | LAYHER SCAFFOLD SYSTEM



**DTS WRIGHT**  
SCAFFOLDING

Contact Dylan 021 239 4276 | [dtswrightscaffolding@gmail.com](mailto:dtswrightscaffolding@gmail.com)

## SURVEYOR

**SURVEY PLUS**  
LAND SURVEYING

Your local Pohutukawa Coast Surveyor

[admin@surveyplus.co.nz](mailto:admin@surveyplus.co.nz) | 020 4 SURVEY (020 4 787839)

## TREE SERVICES

CALL NATHAN 021 196 6509



CHIPPING | TREE PRUNING  
LAND CLEARING | TREE REMOVAL  
HEDGE TRIMMING | STUMP GRINDING

FIND US ON FACEBOOK [coastalcutters@hotmail.com](mailto:coastalcutters@hotmail.com)

**POHUTUKAWA COAST VETS**

LOCALLY OWNED & OPERATED IN BEACHLANDS

Book an appointment  
Ph: 09 320 1472  
Or book online [www.pcvets.co.nz](http://www.pcvets.co.nz)

reception@pcvets.co.nz | 43 Wakelin Rd, Beachlands

## PLUMBERS



**PLATFORM PLUMBING LTD**  
CERTIFIED PLUMBING, GASFITTING & DRAINLAYING

Ben Platt | 021 128 3813  
[ben@platformplumbing.co.nz](mailto:ben@platformplumbing.co.nz)  
[www.platformplumbing.co.nz](http://www.platformplumbing.co.nz)



Land Clearing  
Tree Maintenance  
Tree removal  
Stump Grinding  
Hedge Care

Phone Doug 021537171 • 09 5378595  
[info@dstrees.co.nz](mailto:info@dstrees.co.nz)  
[www.dstrees.co.nz](http://www.dstrees.co.nz)

## WATER



**Coastal**  
PUREWATER LTD

The highest quality water for all your household, property and commercial needs

Ask for our pure water by name

Manukau Quarries LP  
885 Whitford-Maraetai Road, Beachlands | 09 2630220

# BUSINESS DIRECTORY

LIST YOUR BUSINESS ON THIS PAGE FOR LESS THAN \$10 PER WEEK

A 6-month, single line listing costs just \$200+gst  
advertising@pctimes.co.nz | 021 026 14467

## ACCOUNTING SERVICES

Probiz Systems Ltd, Sharon Bramley 021 122 8059  
Diane Myers CA, diane@myersca.co.nz 292 9470  
Business Allsorts, MYOB & Xero Experts 536 5850  
Peat Johnson Murray 869 2091

## AERIALS, TV & HOME THEATRE

Auckland Wide Electrical 536 6800, 021 998 665

## AGGREGATES

Beachlands Mitre 10 536 6567

## APPLIANCE SERVICING

Axial appliance servicing Service@axial.co.nz 573 0877  
Appliance Wizard Ltd Ph Paul 0275 784 226

## ARCHITECTS

Peter Diprose www.diprose.co.nz 530 9065 or 021 125 1498

## ARCHITECTURAL PLAN & DESIGN

Ross J Willoughby 530 9358  
RBG Ltd 027 260 8005

## AUTO ELECTRICIAN

Mobile Auto & Marine 0800 662 352

## BARBERS

Joe's Barbershop 536 7265

## BATHROOMS

Precision Bathrooms Ltd Installation / project management / design Ph Mike Baker 021 726 658

## BEAUTY

Xtreme Beauty & Barbers 600 2325 or 021 992 686  
www.xtremebeauty.co.nz

## BED & BREAKFAST

Brookwood Lodge, Beachlands. 027 285 5068  
www.brookwoodlodge.co.nz

## BLIND SERVICES

Onsite blind cleaning & repairs - plus new blinds info@onsiteblinds.co.nz 0508 253 262

## BOOKKEEPERS

Business Allsorts, MYOB & Xero Experts 536 5850

## BUILDERS

Bryant Builders Ltd 027 493 5507 or 027 692 8777  
GH Building 021 564 263

## BUILDERS' SUPPLIES

Morton Timber Co. Clevedon 292 8656  
Beachlands Mitre 10 536 6567

## CARPET CLEANING

Aladdin Carpet Cleaning, Phone Sheryll 09 537 4320

## CHAINSAW SALES/SERVICE/REPAIRS

Greenmount Mowers & Chainsaws 09 970 4816

## CHOCOLATES

Artisan Chocolates made in Beachlands www.brookwoodchocolate.co.nz - Heather 027 285 5068

## COMPUTER REPAIR

Wi-Fi & Internet, Home and Office IT Support Call Graeme Thomas 027 429 0677

## CONCRETE SERVICES

Aaron Ross Concreting 0210 233 2673  
Murray Douglas Limited 027 498 5267  
Pro-Floors Concrete Ltd, Call Grant 0274 951 280

## COSTUME HIRE

Clevedon Costumes and Vintage Apparel 022 018 2711

## DENTISTS

Whitford Dental Group 530 8461  
- Dr Rick Parfitt, Dr Alex Lindsay & Dr Maad Youhana  
- Hygienist/O.H.T - Latoya Conley 530 8461  
Anthony Hunt Dental Ltd, Dr Anthony Hunt, Clevedon 292 9071  
Marina Dentists Pine Harbour 536 4361  
Smile Dental Beachlands  
- Your local dentist. New patients welcome. 022 8888 171  
- Free examination since 1996 09 302 0808  
www.smiledental.co.nz 0800 4 smile

## DIGGER & TRUCK HIRE

The Little Digger 027 278 0335 or 536 4424  
Digger Landscapes www.diggerlandscapes.nz 021 415 832  
Bizzy Bobcats & Diggers - call Mark 027 494 4414  
Digginit www.digginit.co.nz 027 656 2270

## DOCTORS

Beachlands Medical Centre 536 6006

## DRAINLAYERS

Vibe Earthmovers and Drainage call Vincent 0272 225 377  
Drainage Vision Ltd call Mike Adams 027 593 0326  
Certified drainlayer, CCTV inspections, drain unblocking

## EARLY CHILDHOOD EDUCATION

Whitford Early Learning Centre 530 8726  
Clevedon Kidz Early Childhood Centre 292 8358

## EARTH MOVING CONTRACTORS

Riordan Contracting 09 530 9429 OR 027 430 9429  
Pohutukawa Coast Earthmoving, Grant 027 475 8468

## ELECTRICIANS

Auckland Electrical & Pump Services 536 4074, 027 4741 579  
Pohutukawa Electrical 536 4076, mob 021 769 964

## FENCING CONTRACTORS

White Fencing: 292 8064, 0274 957 868  
- rural fencing, retaining walls www.whitefencing.co.nz  
Kimpton Fencing 027 270 2614  
Rural fencing, farm services, tractor mulching, sheds

## FLORISTS

Clevedon Flowers, www.clevedonflowers.co.nz 292 9540

## FOUNDATIONS & FLOOR SLABS

Pro-Floors Concrete Ltd, Call Grant 0274 951 280

## FUNERAL DIRECTORS

Resthaven Funeral Services  
Rachel Benns & Raewyn Proctor 533 7493, 267 2530  
Ensom and Biswas Funerals  
John Ensom & Rav Biswas 299 6646 or 524 6765  
Fountains Funeral Directors & Monumentalists -  
Papakura, Franklin and Manurewa 298 2957  
Howick Funeral Home Robert Johnstone - Mark Rowley 534 7300  
Souly Funerals Beachlands 0800 47 68 59  
Aroha Funerals Maraetai, www.arohafunerals.co.nz 0800 276 420

## GARAGE DOORS

Repairs & Service, Metro Garage Doors 263 6608

## GARDEN CENTRE

Beachlands Mitre 10 536 6567

## GLASS AND GLAZING

Howick Glass 535 4180

## GUTTER CLEANING

Skyhigh Roof and Gutter Cleaning Ltd  
Website: www.skyhigh.nz 021 951 719

## HAIRDRESSING

Cooper Hairdressing, 16 Te Pene Rd, Maraetai 027 329 1781

## HANDYMAN SERVICES

Local Handyman: 536 5050 or 021 156 7370  
Oakes Build Landscape Maintenance, www.oakes.nz 021 903 020

## HEAT PUMPS

Auckland Wide Electrical 536 6800  
AES - Auckland Energy Solutions 575 1191  
Website: www.aes.nz  
Varcoe Air Conditioning & Heat Pumps  
Your local specialists  
www.varcoe.co.nz info@varcoe.co.nz 0800 088 888

## HOUSE WASHING

Just Clean Me, Exterior Cleaning Services 022 089 2383  
House washing, gutter cleaning, roof treatments, water blasting.  
No Moss, Pressure Washing Solutions 021 989 274

## JEWELLER

Paul Taylor Manufacturing Jewellers 536 4200  
Repairs/Remodelling/Valuations/Insurance Replacements  
Shop C/7, 129 Beachlands Rd, Pohutukawa Coast Shopping Centre

## KITCHENS

Kitchen Craft Ltd, Ph Warren 09 274 4221  
for Sizzling Kitchen Design & Cabinetry www.kitchencraft.co.nz

## LANDSCAPING

Eastside Landscapes 021 484 158

## LAUNDROMAT

Kiwi Laundry Co, www.kiwilaundryco.co.nz 022 463 8416  
7 DAYS at GAS Maraetai, 131 Maraetai Drive, Maraetai 536 4218

## LAWNMOWING & GARDENING SERVICES

F.K. SERVICES - Call Frank 027 415 3657  
Greenacres - Stephen Howe 292 4165 or 021 2266 753  
Prolawns (Beachlands based) Shane 021 746 887  
R&R Garden ServicesRichie: 021 917 332, Roanne: 027 252 8183

## LAWNMOWER SALES/SERVICE/REPAIRS

B'inds/M'tai mower/chainsaw repairs 536 5621 or 027 308 7777  
Greenmount Mowers & Chainsaws 09 970 4816

## LEGAL SERVICES

Sutcliffe Matson Law 09 279 8351 or 021 327 030

## LOCKSMITHS

Local Locksmith - Tony 536 5050 or 021 156 7370  
Armstrong Smarter Security 0800 506 111

## MARINE AND BOATING

Ovlov Marine Pine Harbour LTD 536 5249

## MECHANICAL REPAIRS

Maraetai Automotive 536 6542  
Pohutukawa Motors, 57 Third View Ave, Beachlands 536 6664

## MIRRORS

Howick Glass 535 4180

## OUTBOARD REPAIRS/ MARINE ENGINEERING

Eastern Marine - Mercury Certified Service Centre - Outboards, sterndrive, petrol & diesel. 536 6252

## PAINTERS & DECORATORS

East Auckland Painting Ltd 027 619 2619

## PERSONAL TRAINING

Soul Workouts, mobile fitness training 021 768 596

## PEST CONTROL

Coastal Pest Solutions (including rats, rabbits, possums, pest birds, wasps & bees) 536 6020 or 0273 932 125  
Professional Pest Control 536 6690 or 021 078 3622

## PET ACCOMMODATION

Pets at Whitford Spa and Stay (PAWSS) 530 8860

## PHYSIOTHERAPIST

Beachlands Physio beachlandsphysio.co.nz 09 222 4120

## PILATES

Krystal Jeffery www.mypilatesstudio.co.nz 021 646 729

## PLUMBERS

Dynamo Plumbing 0800 175 988  
BF Brown Plumbing & Drainlaying 0800 477 455

## PLUMBERS & GASFITTERS

Ashby Plumbing & Gas 292 2445 or 0272 553 499

## PROPERTY MANAGEMENT

Rent People Ltd 0800 426 580  
Ray White Beachlands - Five AM Property Management 536 7011  
Barfoot & Thompson Beachlands 536 4990

## PUMP SALES & REPAIRS

Auckland Electrical & Pump Services 536 4074, 0274 741 579  
Malmaks Water Shop 530 8872, 021 353 158  
Allwater Pumps and Supplies Ltd 09 536 5444, 027 536 5444  
Clevedon Pumps & Filtration 027 479 7741

## QUARRY

Manukau Quarries 263 0220

## REAL ESTATE AGENTS

Barfoot & Thompson Beachlands 536 4990  
Barfoot & Thompson Whitford 530 8292  
Ray White Beachlands - Five AM Realty 536 7011

## ROOF PAINTING SERVICES

Master Tradesman. Text details for fast service: 027 517 8494  
Visit our website: www.5starroofpainting.co.nz

## ROOF SOFTWASHING

Skyhigh Roof and Gutter Cleaning Ltd  
Website: www.skyhigh.nz 021 951 719

## ROOFING SERVICES

Alba Roofing 021 584 530  
Roofing & Spouting NZ Ltd 021 766 260

## SCAFFOLDING

Scaffold Connect Ltd 021 235 5963 or 09 576 5879  
DTS Wright Scaffolding Ltd 021 239 4276

## SECURITY SYSTEMS

ADS Security Ltd (alarms & monitoring) 536 6860  
Armstrong Smarter Security and Alarms 09 274 9999

## SEPTIC TANK CLEANING

SST Services phone Rob 09 2947611 or 0274 967430

## SURVEYORS - LAND

McInnes, Read & Lucas Ltd 298 7288  
Churchill Land Development Services Ltd 273 4182  
Survey Plus Ltd 020 4 SURVEY (020 4 787839)

## TAXIS/TRANSPORT/SHUTTLES

Coast Shuttle - local hire & airport trips 536 6488 or 0274 722 613  
Driving Miss Daisy 09 534 7712 or 021 174 9999  
Country Roads - Let me take you home 021 084 28757  
Airport transfers / Group Tours / School Runs  
Info@country-roads.co.nz, Book online at www.country-roads.co.nz

## TRAVEL - INTERNATIONAL & DOMESTIC

Clevedon Travel Brokers chrisshyashby@ttb.co.nz 027 273 9701  
Travelselect Beachlands call Mark or Sam 536 6730  
Beachlands Travel Broker phone Nicole 021 1769791  
nicole.ambrusfy@thetravelbrokers.co.nz

## TREE SERVICES

Jessep Contracting - JessepContracting.co.nz 022 607 4455  
DS Trees Limited 021 537 171 or 09 537 8595

## TYRES - SALES & SERVICE

Maraetai Automotive 536 6542  
Pohutukawa Motors 536 6664  
Tyre Guard - Mobile Tyre Service, Call Mike 021 901 034

## UPHOLSTERY & CANVAS

Eastern Cover Centre. Boat & Outdoor Furniture Covers 535 7524

## VALUERS - PROPERTY

Property Valuations Ltd, Papakura 299 7406

## VETERINARY SERVICES

Franklin Vets - Pohutukawa Coast Shopping Centre, 538 0010  
Beachlands, Open: Mon-Fri: 8am-6pm Sat: 9am-1pm  
Pohutukawa Coast Vets - 43 Wakelin Rd, Beachlands 320 1472  
Open: Mon-Fri: 8am-6pm Sat: 9am-12pm

## WATER DELIVERY

Beachlands/Maraetai Water Supply 273 9763  
Clevedon Water 292 8099  
Whitford Water Supplies 530 8164  
Maraetai Blue Ltd 536 6437, 027 536 6437  
Carlton Haulage 0800 420 246  
Coastal Water Cartage 0508 262 7825  
WET AZZ - www.wetazz.co.nz 0800 WET AZZ (0800 938 299)  
A Plus Water 021 0727 163  
PROWATER - Support Local, Ph Shane/Sheridan 021 530 727

## WATER TANK CLEANING & REPAIRS

Maraetai Blue Tank Cleaning Call Jacob 021 029 84170  
Clevedon Pumps & Filtration 027 479 7741

## WATER TREATMENT

Malmaks Water Shop 530 8872, 021 470 588  
Allwater Pumps and Supplies Ltd 09 536 5444, 027 536 5444  
Clevedon Pumps & Filtration 027 479 7741

## WEDDING VENUES

Te Puru Centre 536 5360  
Maraetai Beach Boating Club 536 6649



## YOUR LOCAL BUILDER

If you're thinking of building, our local team is here to help you every step of the way. Bring us your ideas and we'll work with you to design a home that suits your needs.

### Showhome

2 Pureirei Drive, Clevedon. Open Sat & Sun 11am-2pm  
09 274 2082 gjgardner.co.nz

G.J. Gardner. HOMES